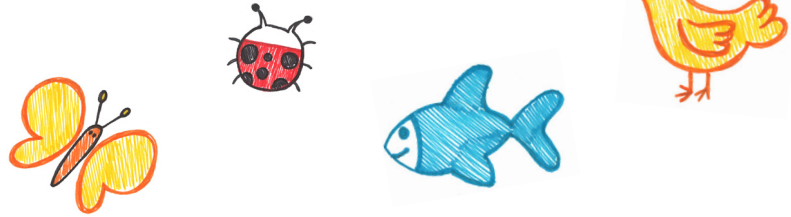




Habitat Game

Biodiversity Intro Activity



Time: 15min

Aim: to simulate the effect on biodiversity as population increases

Equipment/Requirements: 10 hoops or small mats - to use to represent habitat. Grass area or safe area for students to run around.

Game:

- Ask students to think about an animal, any animal - possum, eagle, lizard, etc. They should imagine that they are that creature.
- Mats/Hoops are scattered around the area - they are the habitat - safe places where creatures can live, feed, shelter etc
- All students run around feeding, foraging etc - on the call of “habitat” they need to find a habitat to shelter in (this is the situation 300 years ago, animals had a pretty good life)
- Settlers moved in and started cutting down trees - remove one mat. All students run around feeding, foraging etc - on the call of “habitat” they need to find a habitat to shelter in. There will be more animals in some habitats now due to the habitat loss.
- The population increases, homes, factories are built so take away another mat. Foxes and cats have been introduced - one student becomes a fox and another a cat - when the students are running around they can be caught - if caught they are out of the game. All students run around feeding, foraging etc - on the call of “habitat” they need to find a habitat to shelter in. There are now less animals due to the predators.
- More habitat lost - building roads, schools, hospitals, shopping centres - take away another mat or two, maybe more predators are in the game. All students run around feeding, foraging etc - on the call of “habitat” they need to find a habitat to shelter in. Less animals and less habitat to live in - more distance between habitat.
- Game continues on until there are only 2 or 3 mats left and maybe only a quarter of the animals. This is today - not much habitat left or animals. Habitat is not connected but people are doing things to improve the situation - revegetation, pest animal control. If we work on this we will make sure the situation improves.
- Ask students how we can improve the situation? Look for answers like planting more vegetation - where should it be planted etc.

