



Government of South Australia

South Australian Murray-Darling Basin
Natural Resources Management Board



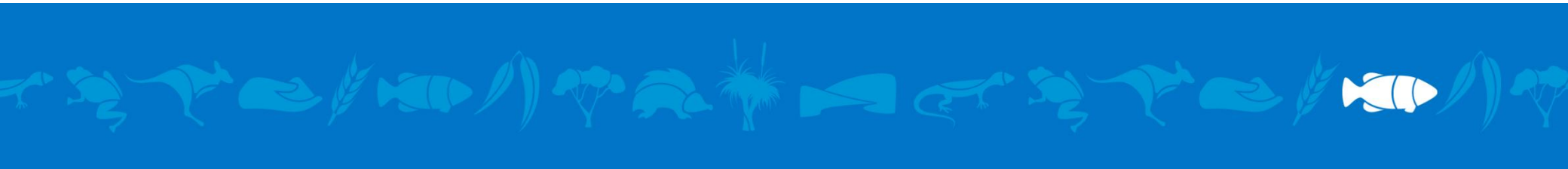
Integrated Vulnerability Assessment for the S.A. Murray-Darling Basin NRM Board Region

Murray Bridge Forum - 24 July 2012



Government of South Australia

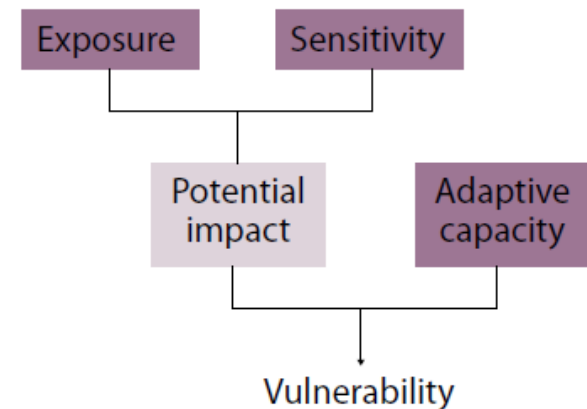
South Australian Murray-Darling Basin
Natural Resources Management Board

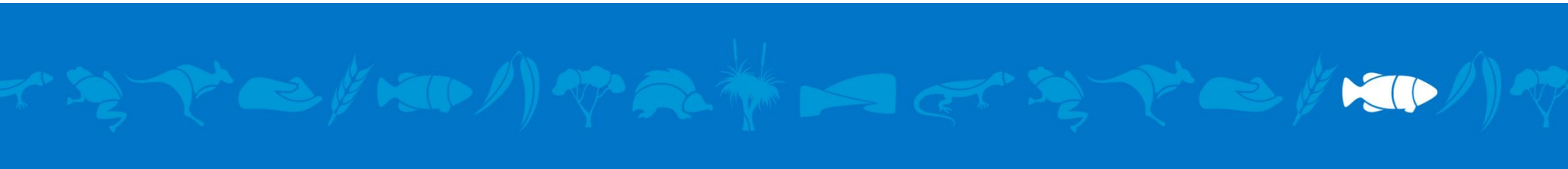


Integrated Vulnerability Assessment for the S.A. Murray-Darling Basin NRM Board Region

Understanding the relationship between exposure, sensitivity, adaptive capacity and vulnerability enables the identification of specific adaption options to boost adaptive capacity.

In many cases boosting adaptive capacity will be achieved by reducing other non-climate related stresses. Social, economic and environmental systems that are already under stress from other changes will find it difficult to cope with the expected climate changes as well.





Integrated Vulnerability Assessment for the S.A. Murray-Darling Basin NRM Board Region

“An integrated step toward economic, social and environmental wellbeing in the face of long-term climate change”

The project is aimed at “value adding” to the body of work that has been and is being undertaken in the S.A. Murray-Darling Basin region.

The objectives of this project will be largely met by collation, interpretation and dissemination of current and previous studies.

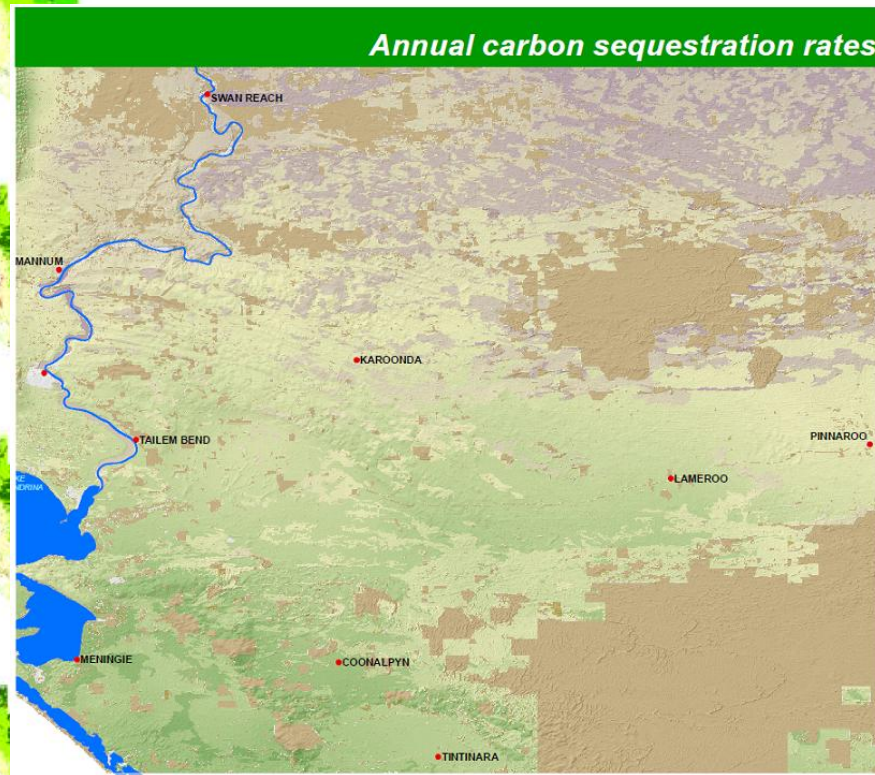
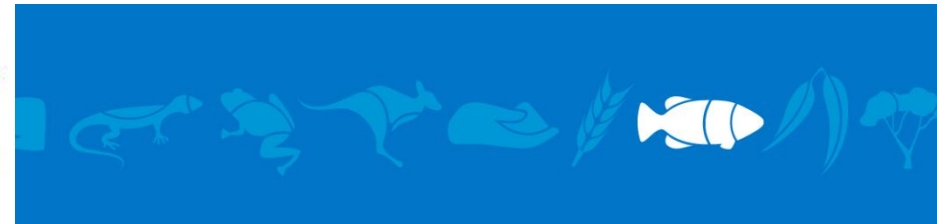
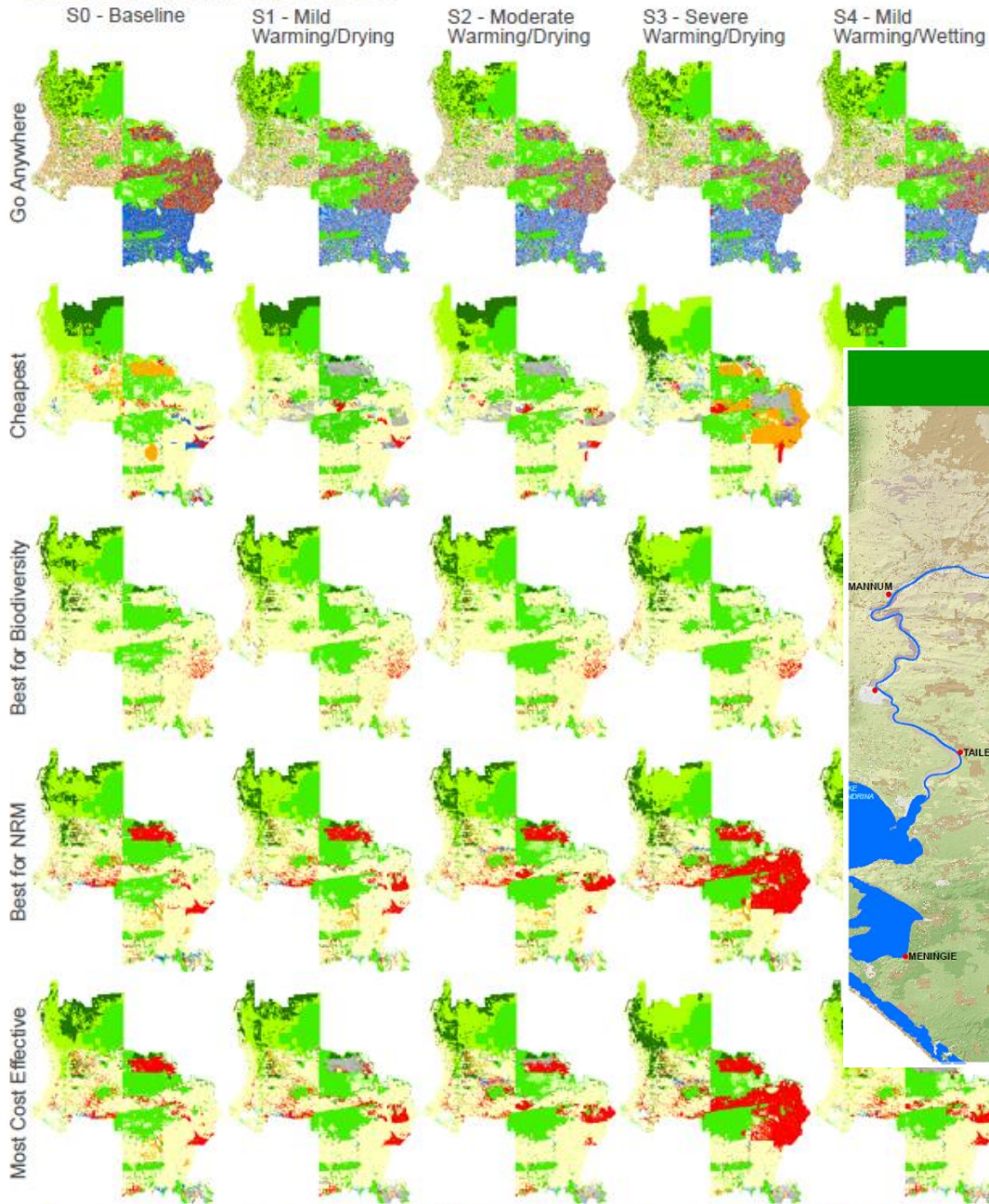
Aims to bring all climate change projects within the region together, including SBC.

A project focus will be on disaster management (bushfire, extreme storm, drought)

The following stakeholders will be actively involved in the project:

- SA Murray-Darling Basin Natural Resources Management Board
- Regional Development Australia (Murraylands and Riverland)
- Local Government Association
- Murray & Mallee Zone Emergency Management Committee
- University of Adelaide
- Department for Environment & Natural Resources
- The general community

Lower Murray Landscape Futures



Regional Development Australia
Murraylands & Riverland Inc.

Government of South Australia
South Australian Murray-Darling Basin
Natural Resources Management Board

Government of South Australia
Primary Industries and Resources SA

Woodlot Plantings

Value
High : 10
Low : 0
Native Vegetation Cover

Projected annual carbon sequestration rates (Carbon dioxide equivalents).
Lower portion of the South Australian Murray-Darling Basin shown on map.
Data courtesy DWLBC. See Map Notes for further details.

0 10
Kilometers

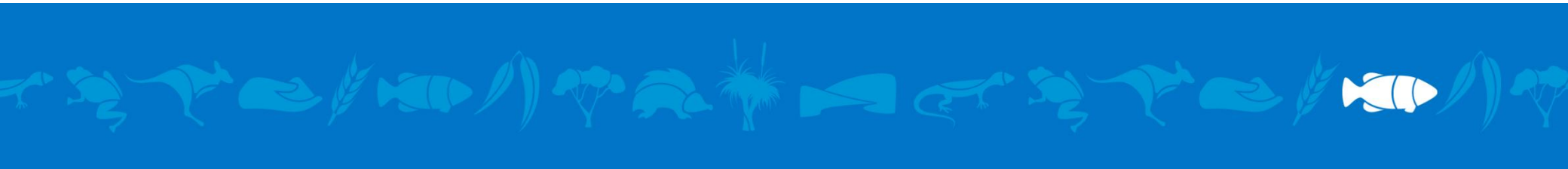
SAMRIC

Map prepared by the South Australian Murray-Darling Basin Resource Information Centre (SAMRIC) from data supplied by Department of Land, Water and Biodiversity Conservation, Department of Environment and Heritage.

Although every effort has been made to ensure the accuracy of the information displayed, SAMRIC and its employees make no representation, either expressed or implied, that the information displayed is accurate or fit for any purpose and expressly disclaim all liability for loss or damage arising from reliance upon the information displayed.

© SAMRIC 2010

Source: <http://www.rdamr.org.au/agro-forestry.html> & <http://www.landscapefutures.com.au/publications.html>



Integrated Vulnerability Assessment for the S.A. Murray-Darling Basin NRM Board Region

What phase 1 & 2 will deliver:

- ❖ ***A risk assessment of the economic, social and environmental assets for the region working with all sector stakeholders***
- ❖ ***Regionalize climate data and risk at a finer scale***
- ❖ ***Consider mitigation actions***
- ❖ ***Look at the capacity from within a system to adapt to the impacts***
- ❖ ***Develop adaption options and prioritises them***
- ❖ ***Consider risk transference where actions may affect others adversely***
- ❖ ***Merge project activities***