



District Council of Loxton Waikerie

**Integrated Vulnerability Assessment for
the SA Murray Darling Basin**

Regional Forum & Workshop

Influencing today ... shaping tomorrow

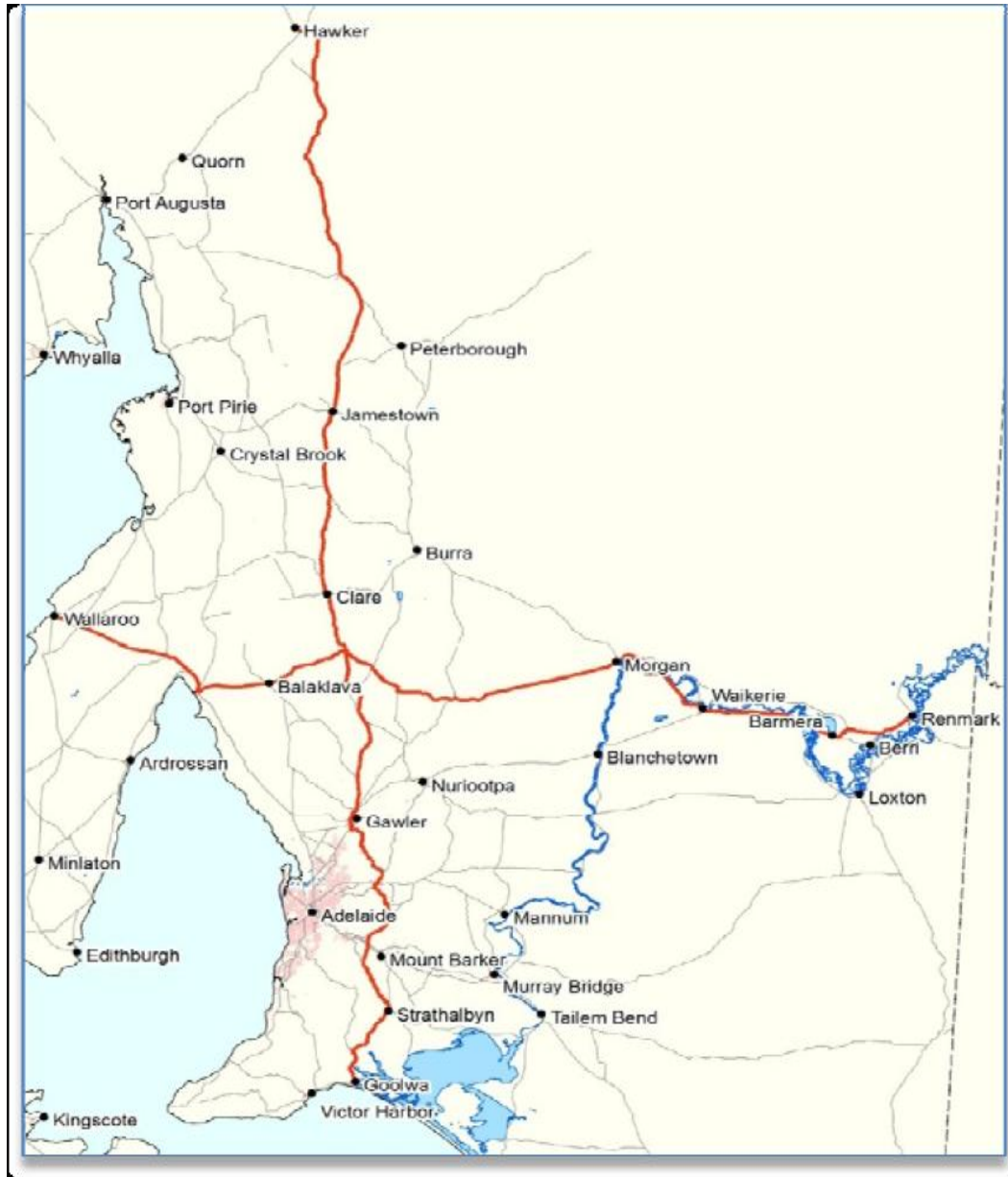


Research Focus Areas Relevant to Rural Local Government

- Creating and audit of road and water infrastructure in SA
- A Participatory Community Mapping Project of Perceptions of Climate Change
- An Assessment of grape and grain growers' attitudes toward climate change in SA
- Leading Communities to Plan and Implement Climate Change Adaptation Actions in the Face of Uncertainty
- The Central Local Government Region integrated climate change vulnerability assessment
- Industry structure and climate change impacts

Influencing today ... shaping tomorrow

Human Dimensions of Climate Change on the Transect





Storm Water Catchment & Reuse

**\$1.26m to complete the Loxton West Storm
water catchment and reuse project**



Australian Government

**Department of Sustainability, Environment,
Water, Population and Communities**

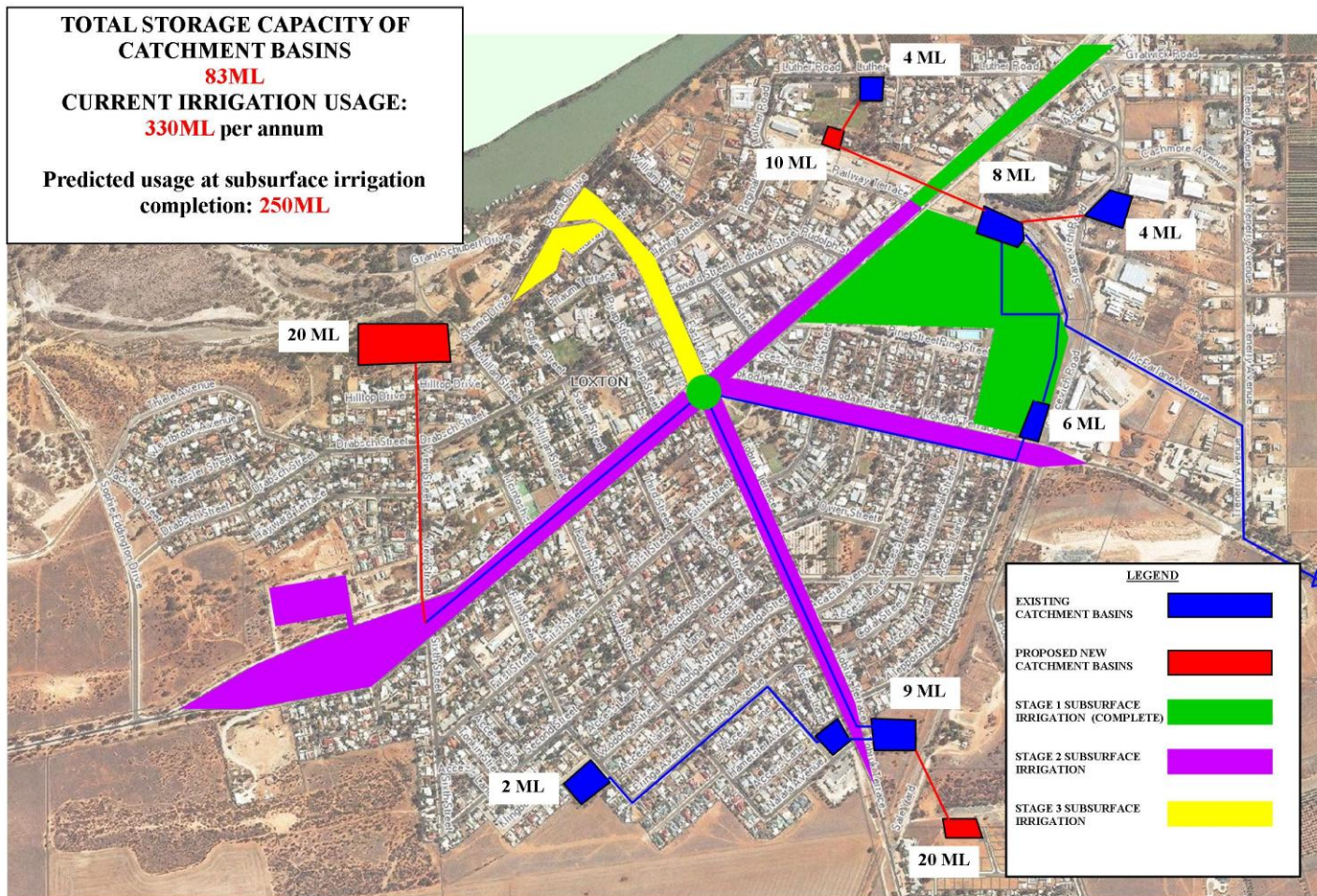
Influencing today ... shaping tomorrow



- Storm water dam enlarged and linked to Loxton Storm water capture and reuse project
- Completion of the Loxton Community Wastewater treatment scheme
- Install Stage 2 subsurface / above surface irrigation - Loxton



Catchment and Usage





Potential Issues for Infrastructure

- accelerated degradation of assets
- reduced life expectancy
- impacts of extreme weather events
- increased costs
- opportunities for new infrastructure and technology

Roads Wear Out !

Prof Michael A P Taylor

Influencing today ... shaping tomorrow