

Aquatic Macroinvertebrate ID Key



Legs, tails or feelers



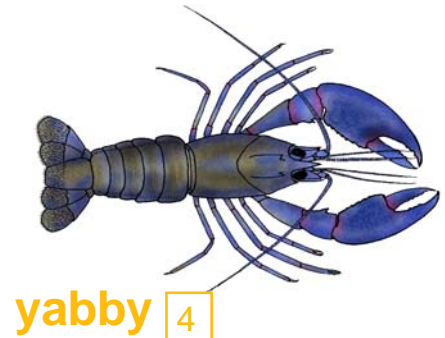
caddisfly larva 8



stonefly larva 10



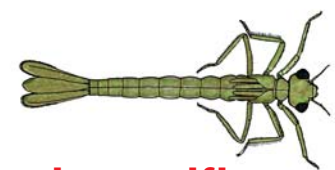
mayfly larva 9



yabby 4

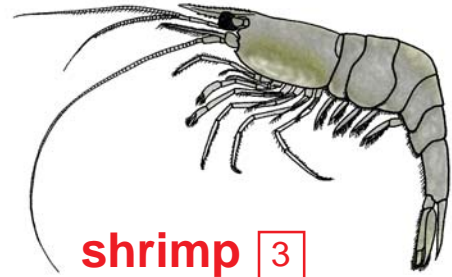


dragonfly larva 3



damselfly larva 3

Swims fast



shrimp 3



diving beetle 2



water boatman 2

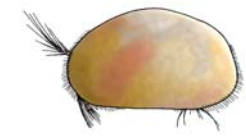


back swimmer 1



scud 3

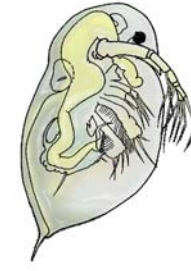
Tiny



seed shrimp NR



copepod NR

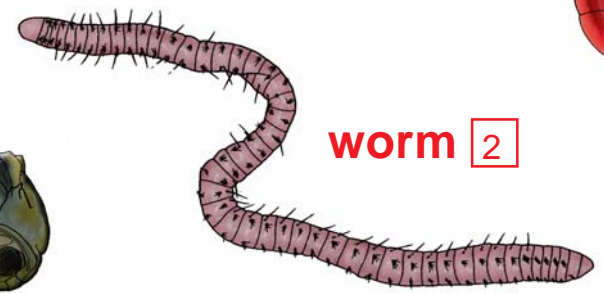


water flea NR

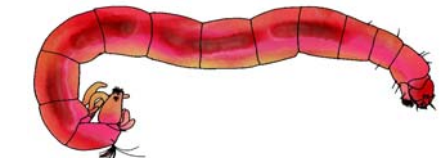


water mites 7

Wriggles



worm 2



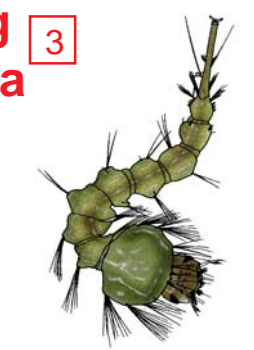
non-biting midge larva 3



mosquito pupa 1



biting midge larva 4



mosquito larva 1

Slides



freshwater snail 1



leech 1



flatworm 2

Pollution Sensitivity*:

- NR Not rated
- 10-8 Very sensitive
- 7-6 Sensitive
- 5-4 Tolerant
- 3-1 Very tolerant

Sensitivity ratings from SIGNAL2 system in "New sensitivity grades for Australian river macroinvertebrates. Bruce C. Chessman. Marine and Freshwater Research, 2003, 54, 95-103."