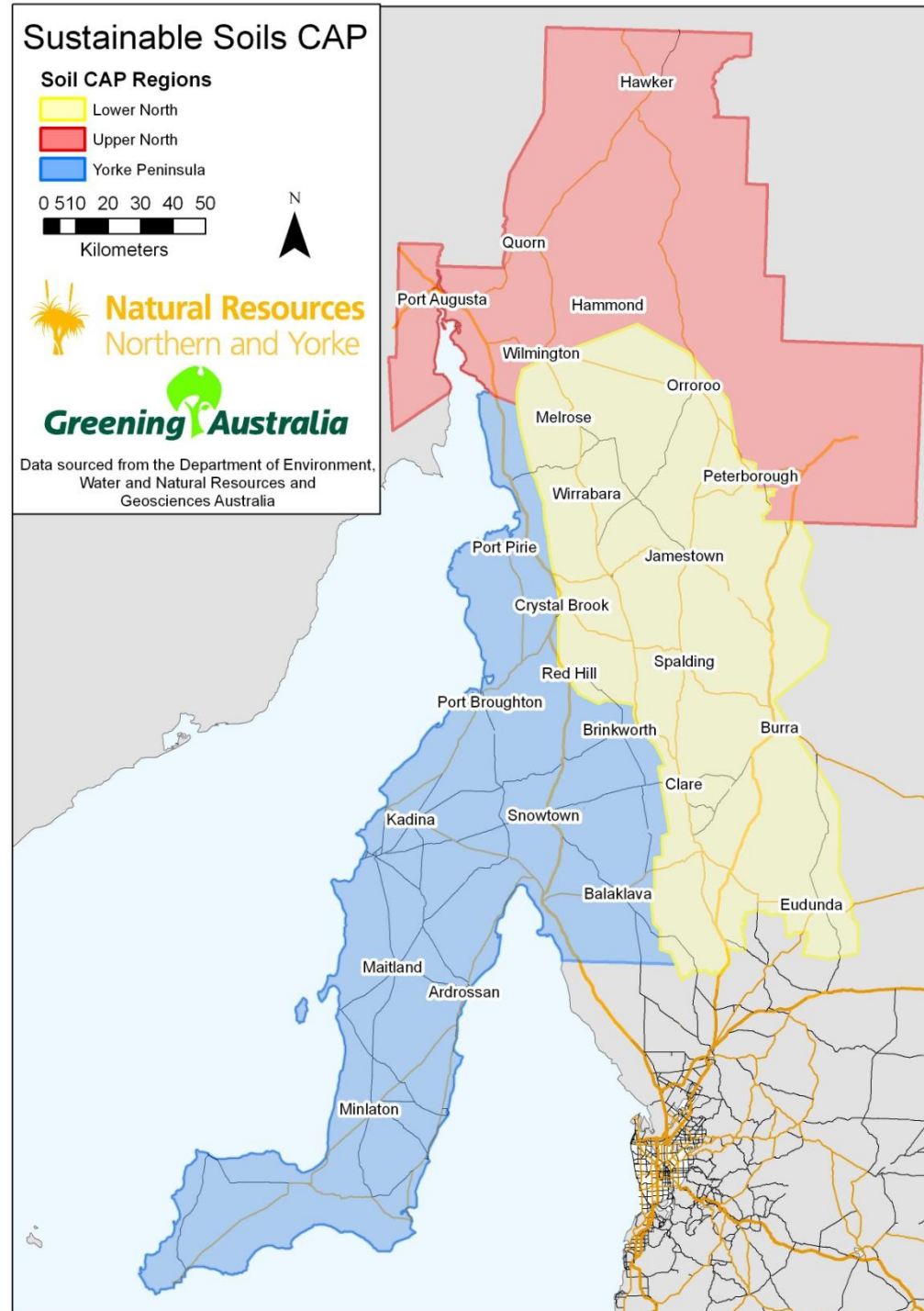


Sustainable Soils CAP

To Protect Soil Health and Condition
for Agricultural Production

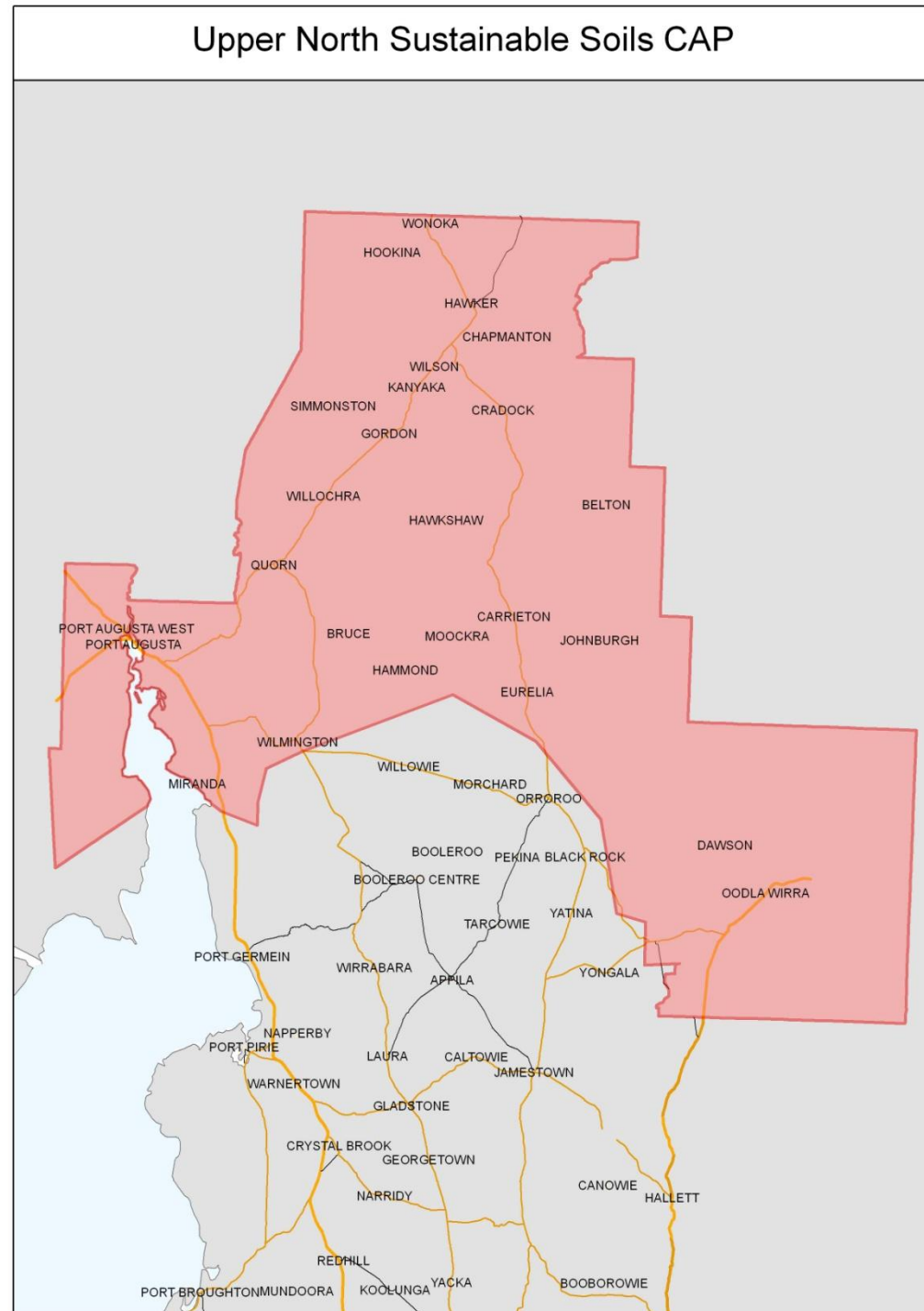
3 Regions

1. Upper North
2. Lower North
3. Yorke Peninsula



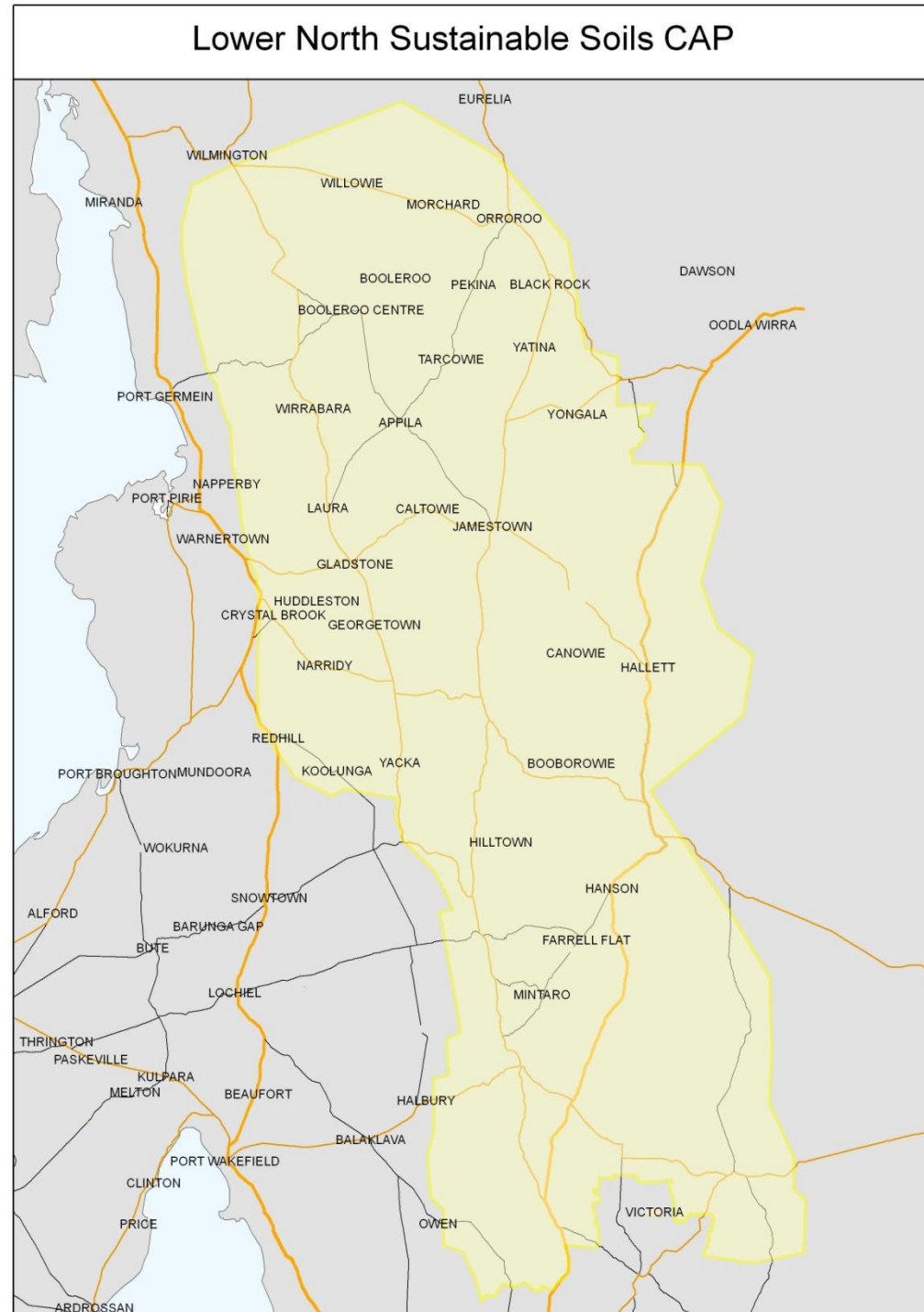
Upper North Assets

1. Low Rainfall (<300mm) Coastal Plains
2. High Range Cropping
3. Low Range Cropping
4. Low Range Grazing
5. High Range Grazing
6. Willochra Plains
7. Minburra Plains
8. Hookina Plains
9. Rocky Range



Lower North Assets

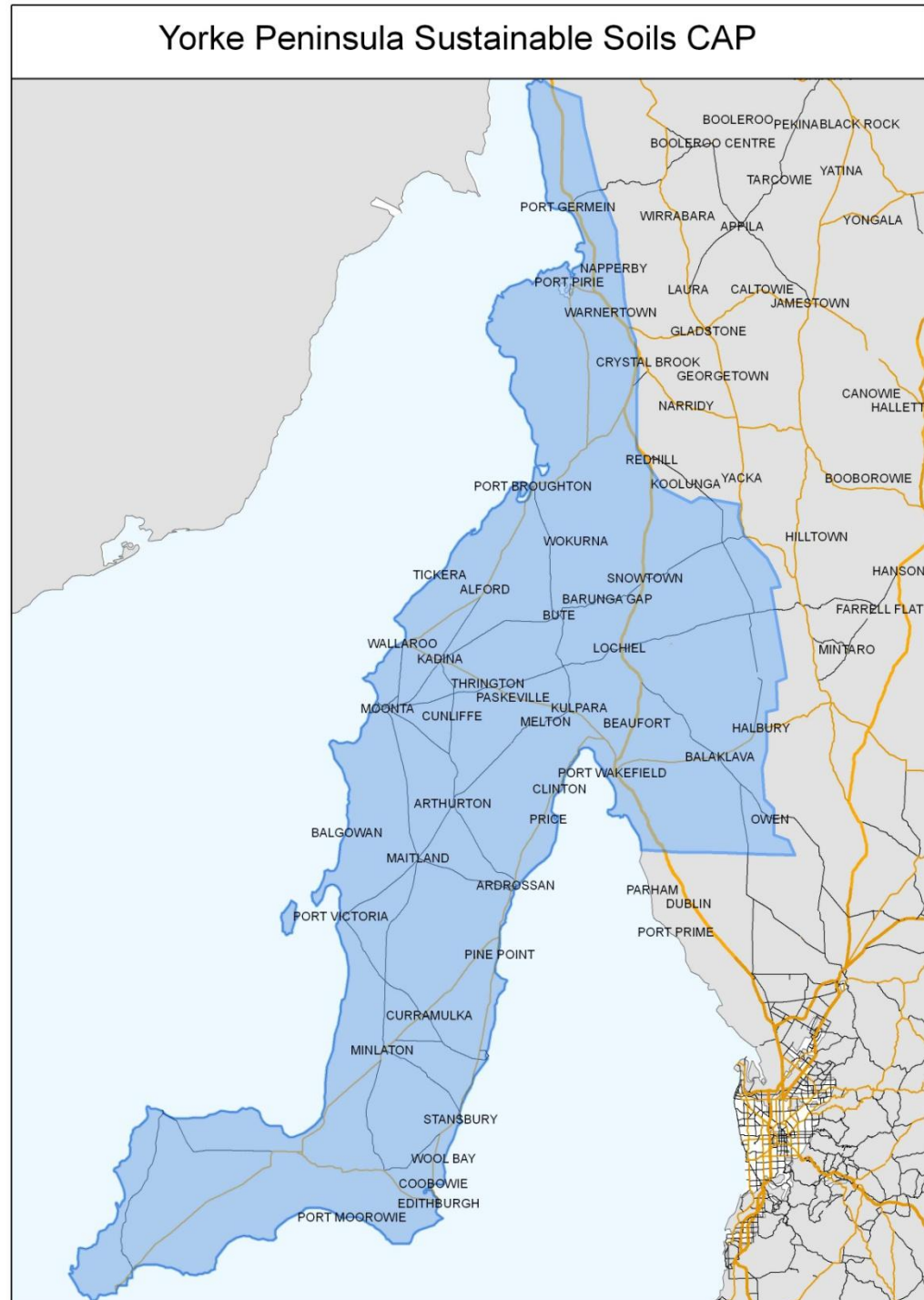
1. High Rainfall (>450mm)
Plains and Valley Floors
2. Medium Rainfall (300-450mm)
Plains and Valley Floors
3. High Rainfall (>450mm)
Mid Slopes
4. Medium Rainfall (300-450mm)
Mid Slopes
5. High Rainfall (>450mm)
Ranges
6. Medium Rainfall (300-450mm)
Ranges



Yorke Peninsula

Assets

1. Wetlands
2. Coast
3. Naturally Saline Lands
4. Fertile Uplands
5. Shallow Soils
6. Dune / Swale Systems
7. Highly Calcareous Soils
8. Hummock Range
9. Land – Sea Interface



Sustainable Water CAP

The Sustainable Use and
Management of Water Resources

1 Regional CAP

1. Upper North Surface Water (Willochra and Mambray Coast)
2. Lower North Surface Water Catchments (Broughton, Wakefield and Light)
3. Prescribed Water Areas
4. Surface Water Reservoirs
5. Other Surface Water Catchments (Diamond Lakes, etc.)
6. High Value Ground Water
7. Low Value Groundwater
8. Recycled, Storm and Alternative Use Water
9. Imported Water
10. Environmental, Social and Cultural Water

