

Understanding your NRM levy - land

Natural resources management (NRM) levies are raised by the South East Natural Resources Management Board to fund projects and programs to enable landholders, industry and the community to manage our region's natural resources, through four priority investment areas of water management, pest animal and plant management, soil and land management, and habitat conservation.

There are two NRM levies; a **land levy** on all rateable land in the South East, and a **water levy** on all water licences and allocations. The Board invests NRM levies on services to support the region as outlined in its Business Plan 2019/20 – 2021/22.

Land levy basis

The NRM land levy is a fixed charge that depends on the purpose for which land is used.

The categories for purpose of use are primary production, commercial, industrial and residential, vacant land and other.

The total amount of income collected from the NRM land levy in 2019/20 will increase by 2.7% in line with CPI.

Due to the way the levy rates per land use category are calculated, the rates for individual categories will differ from the 2.7% change overall. As a result, the indicative rate for the primary producers will rise by 0.5% (\$1.68) only.

The biggest increase in 2019/20 will be for industrial users +5.8% (\$10.09).



Frequently asked questions

Why is the NRM levy included on my council rates notice?

Your council is required to collect the NRM land levy on behalf of the South East NRM Board, in accordance with the *Natural Resources Management Act 2004*.

The SE NRM Board pays councils a collection fee each year for providing this service.

How can I change my land use category?

Your land use category is assigned by the State Valuation Office. Please contact your council who can help you to apply to change the land use category assigned to your property.

What is single farm enterprise?

If you're a primary producer with more than one rateable property within a South East council area, you can apply to council to have your properties treated as a single farm enterprise. This means your enterprise will be charged the NRM land levy once annually.

If you own land in more than one council area, the land levy is payable in each.



For more information on your land levy contact Natural Resources South East on **08 8735 1177**.



Government of South Australia

South East Natural Resources Management Board

www.naturalresources.sa.gov.au/southeast

What services does the Board deliver?

Through the NRM levies, this year the SE NRM Board will deliver the following services:

Maintaining water quality and availability



- Landholder advice on managing surface water
- Revision of Tatiara and Padthaway Water Allocation Plans
- Engaging schools and community on water issues
- Advice and compliance on Water Affecting Activities

Minimising impacts of pest plants and animals



- Landholder advice and compliance on managing pests
- Control programs for targeted species, including new incursions and deer
- Monitoring and mapping pests
- Engaging schools and community about pests

Maintaining the health of soils and land



- Landholder advice on managing soils and land
- Soil and water testing and engagement
- Weather stations providing data to farmers
- Planning and monitoring for soils issues
- Engaging schools and community about maintaining soils

Conserving native vegetation, wetlands and coastal habitats



- Landholder advice on conserving native vegetation on private land and restoring wetlands
- Community-led habitat projects
- Engaging schools and community about conserving habitats

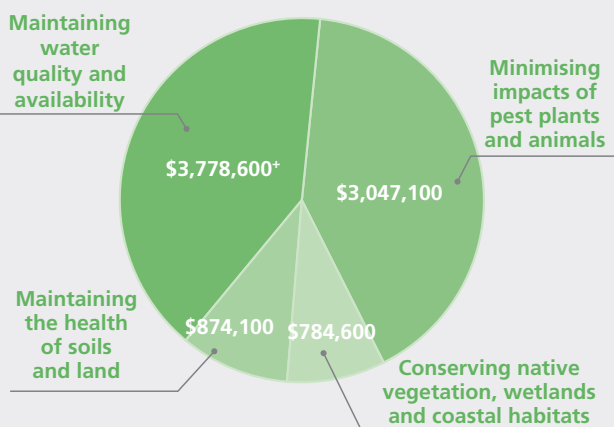


Want more information?

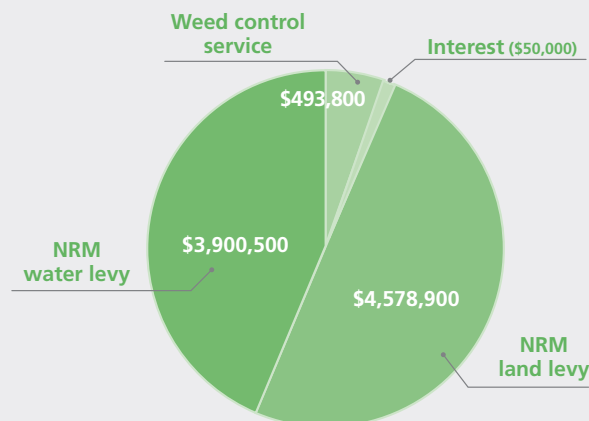
Contact us on **08 8735 1177** or see our website: naturalresources.sa.gov.au/southeast/about-us/nrm-levy

How your levy is spent

Program Investment 2019/20



Sources of Funding 2019/20



*This includes \$2,435,400 as a contribution towards State water planning and management costs, including water licensing, water monitoring, compliance activities and policy advice to support the management of water resources. The total includes employing staff in the South East to undertake these activities.

